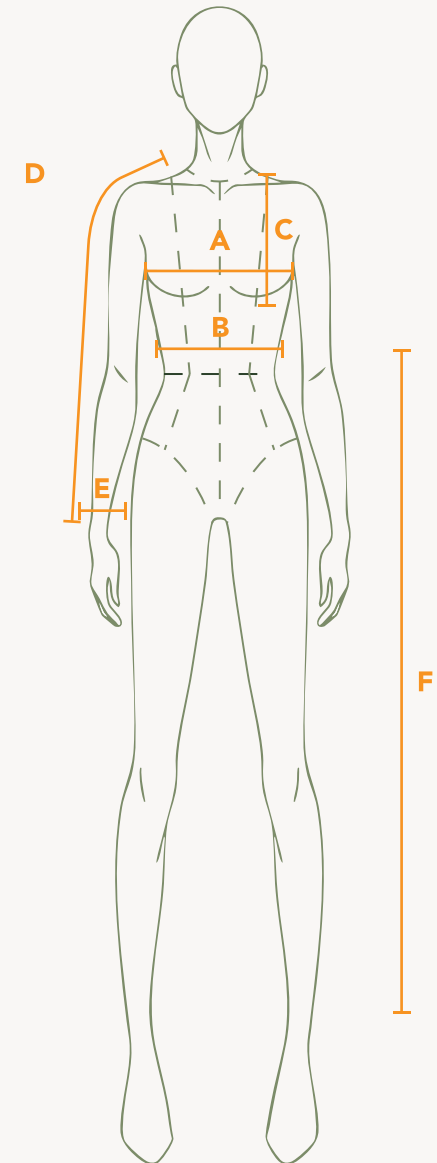




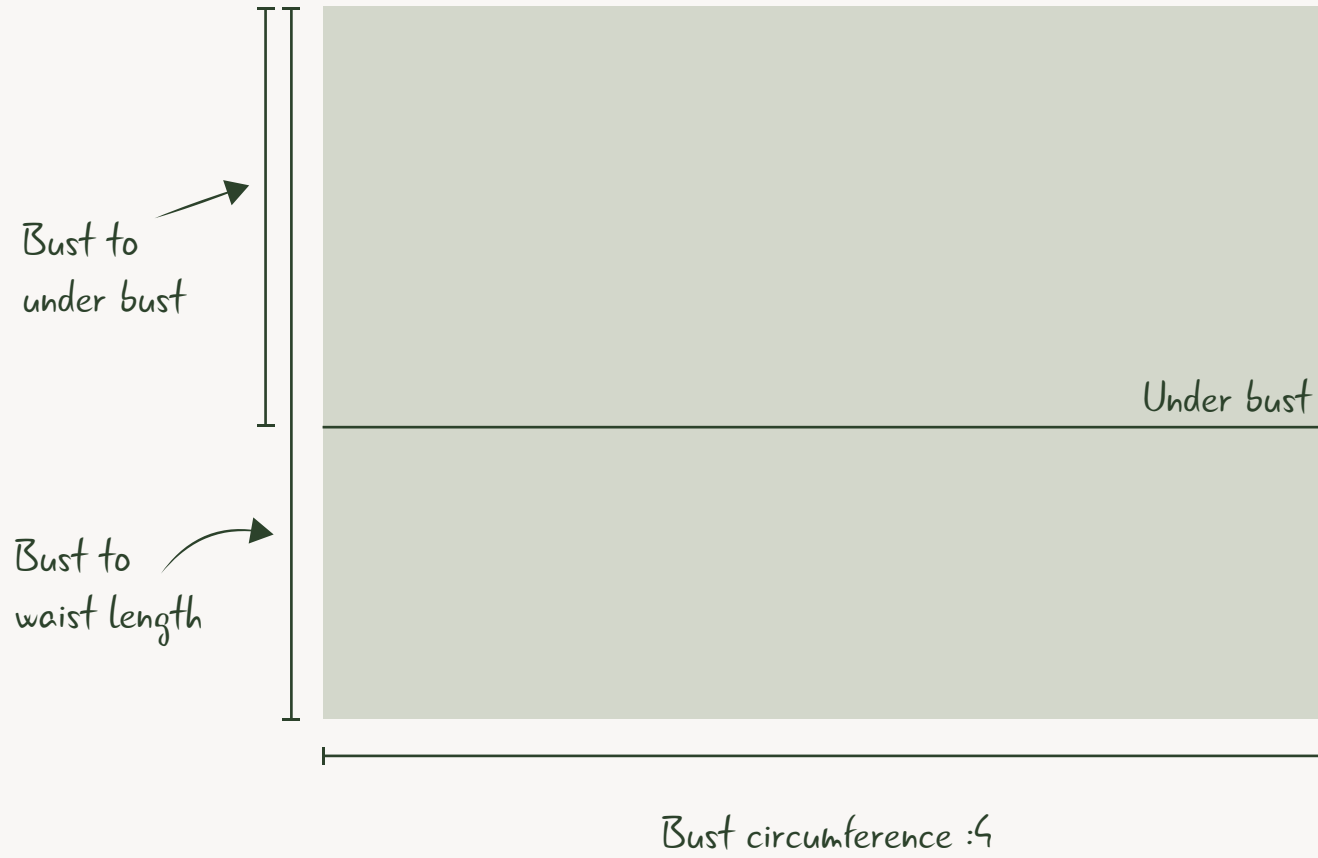
Aetherea

Puff Sleeve Dress *Measurement*

To Measure	Measurement	Allowance	Total
A. Bust circumference			
B. Above waist circumference			
C. High point shoulder to underbust			
D. Sleeve length			
E. Wrist or elbow circumference			
F. Skirt length			



Puff Sleeve Dress *Front*

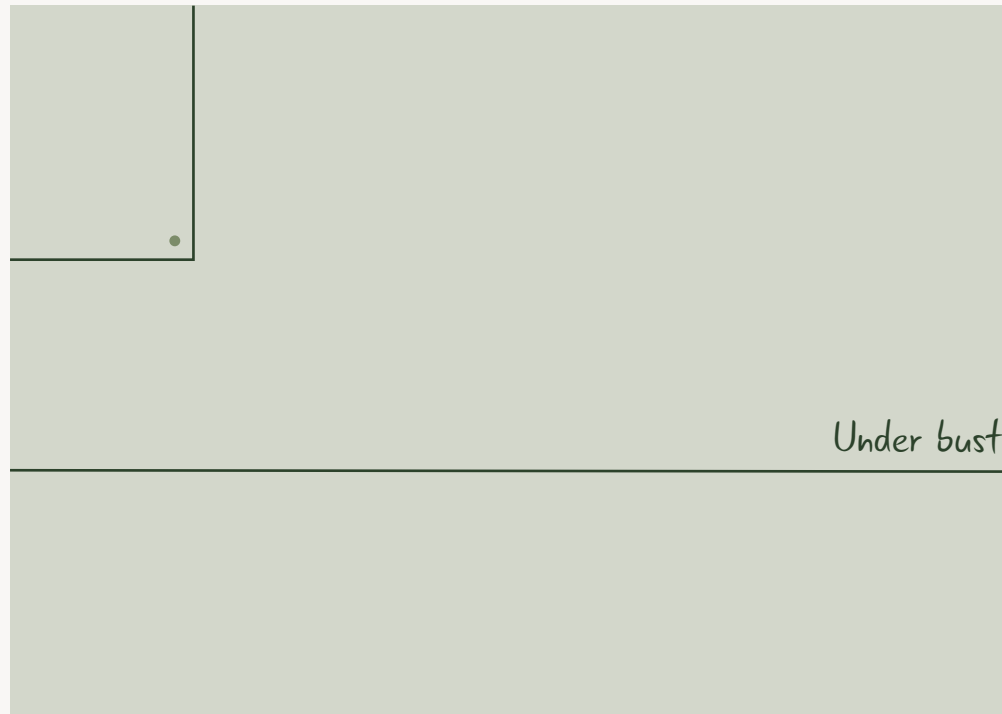


Puff Sleeve Dress *Front*

Underarm
measurement



Length from mid
arm pit to bottom
armpit

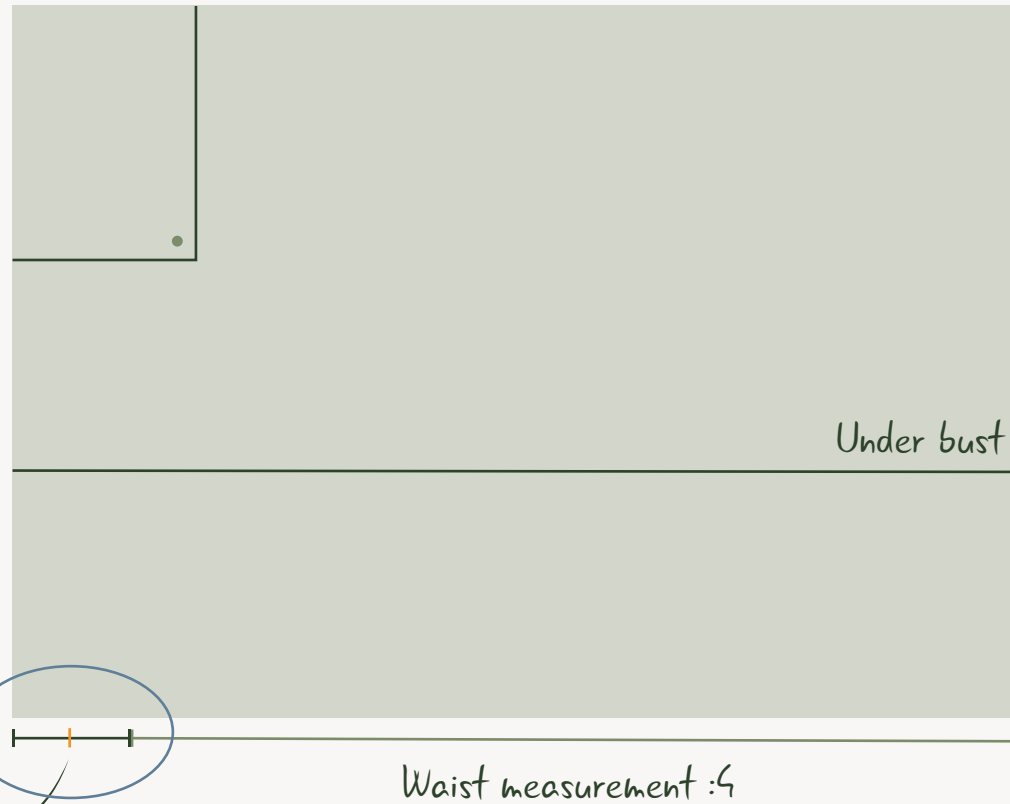


● = 90 degree

Puff Sleeve Dress *Front*

This part here is excess fabric. We are taking this measurement and distribute it within the pattern

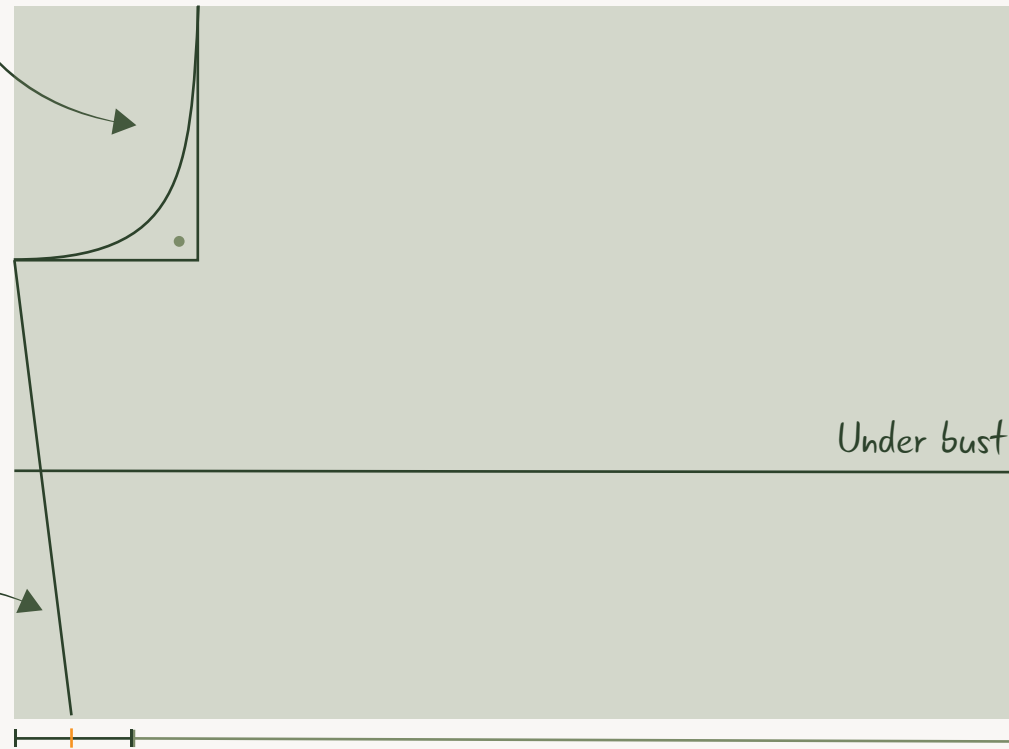
Take this measurement and divide it by 2



Puff Sleeve Dress *Front*

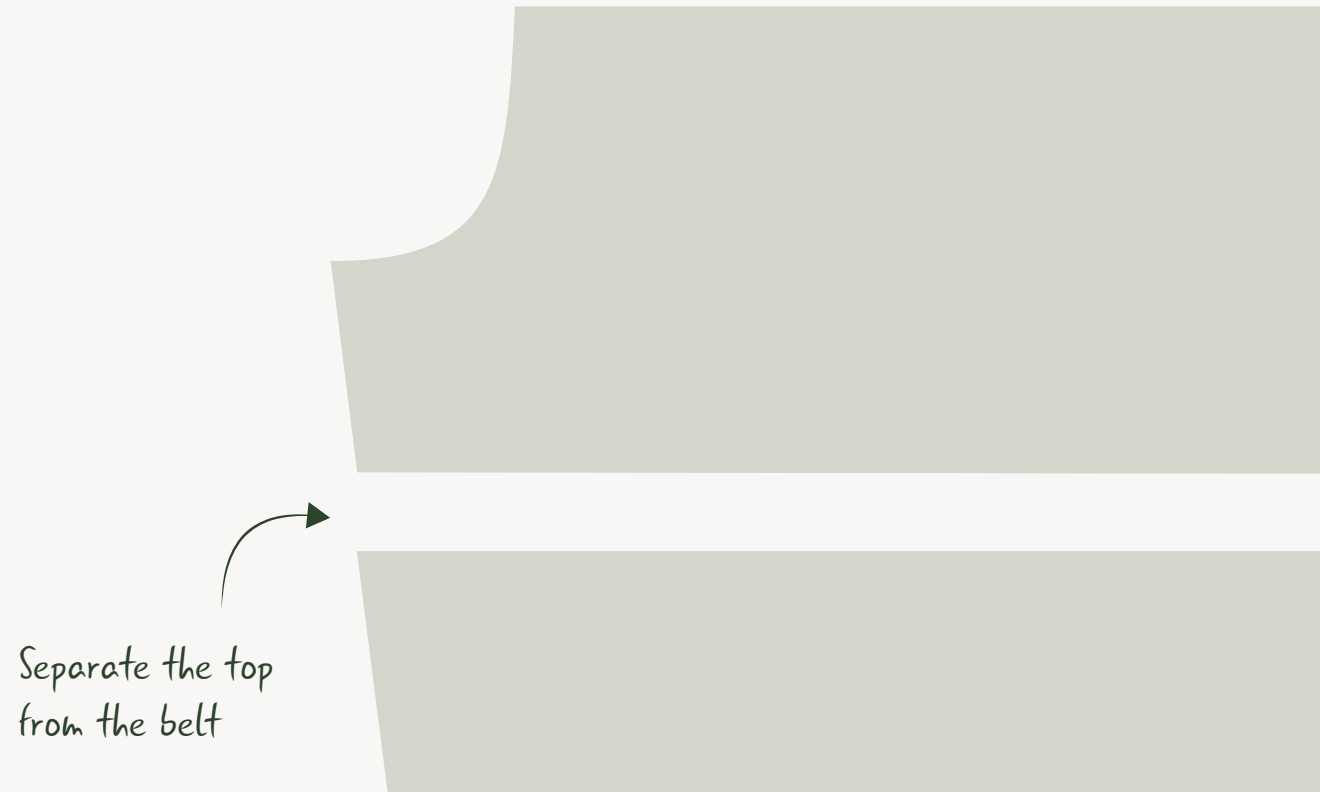
Create a slope for the armhole.
Make the front more scooped
than the back

Draw a line from
your underarm to
the middle point



Waist measurement :4

Puff Sleeve Dress *Front*





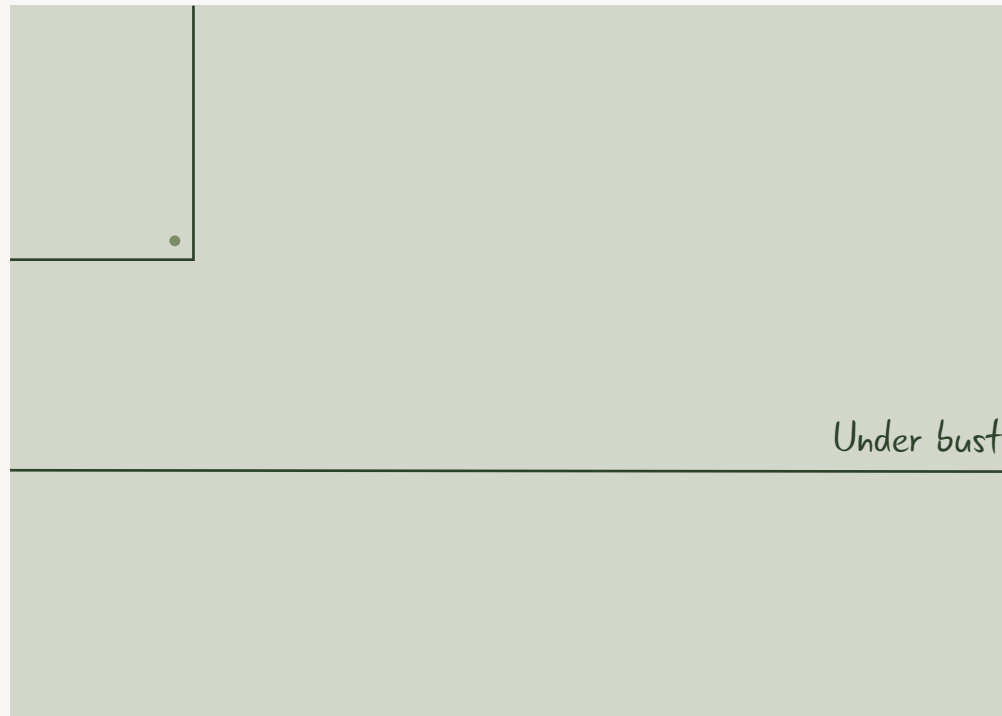
Back

Puff Sleeve Dress *Back*

Underarm
measurement

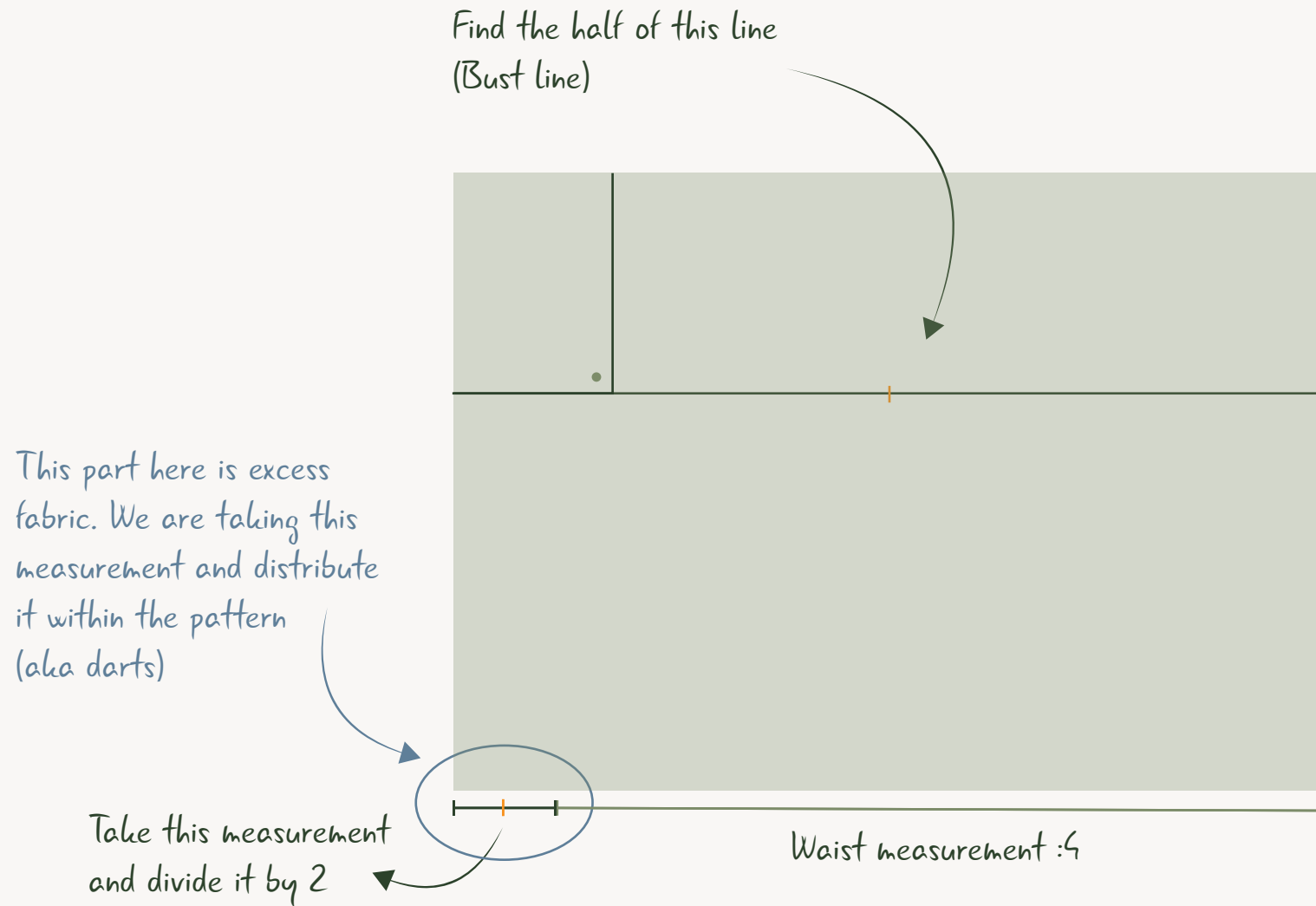


Length from mid
arm pit to bottom
armpit



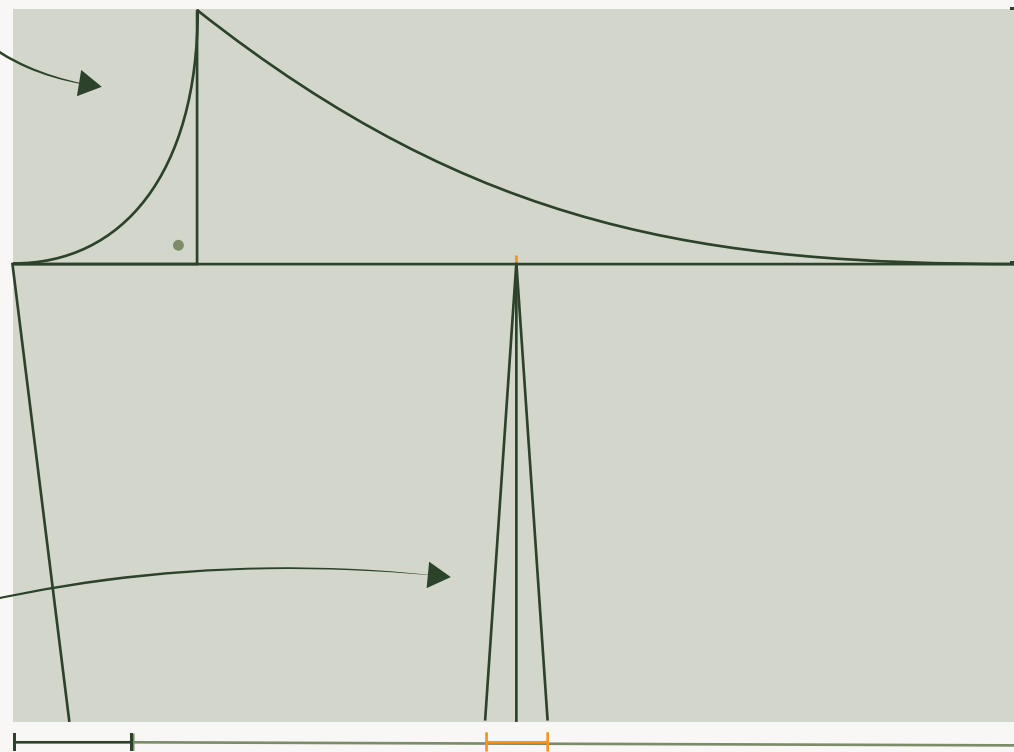
● = 90 degree

Puff Sleeve Dress *Back*



Puff Sleeve Dress *Back*

Create a slope for the armhole.
Make the back more shallow
than the front

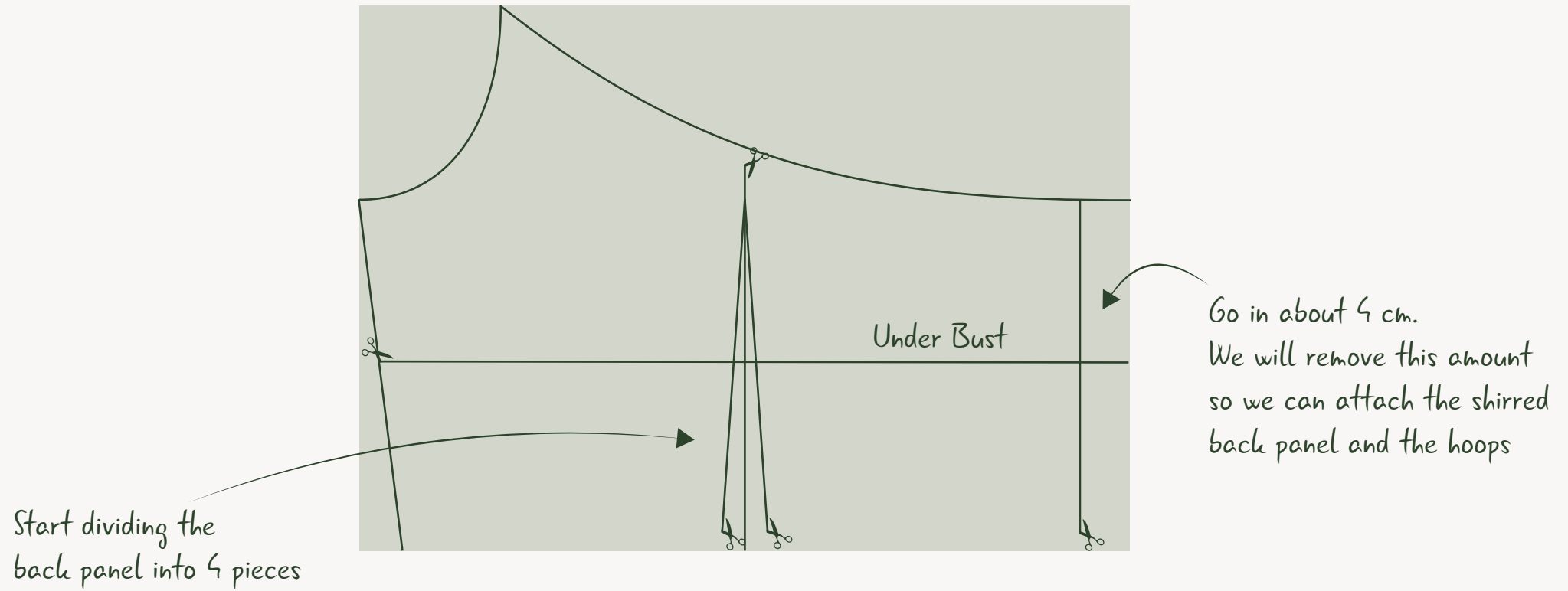


This is the length of how
deep you want your back to be

From the middle point,
connect the lines to the
points at the bottom

Waist measurement :4

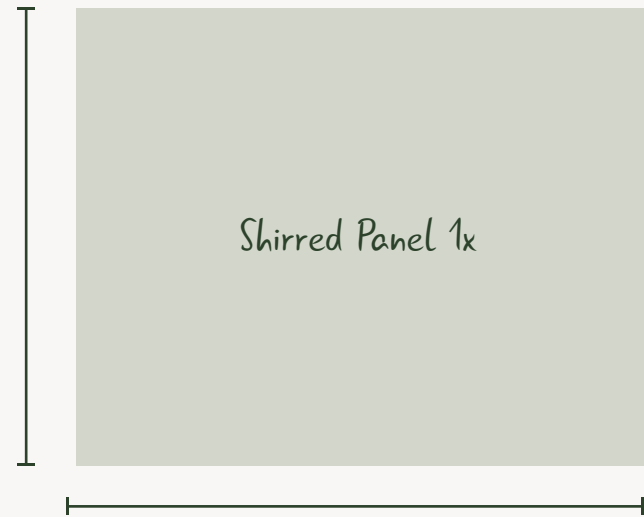
Puff Sleeve Dress *Back*



Puff Sleeve Dress *Back*



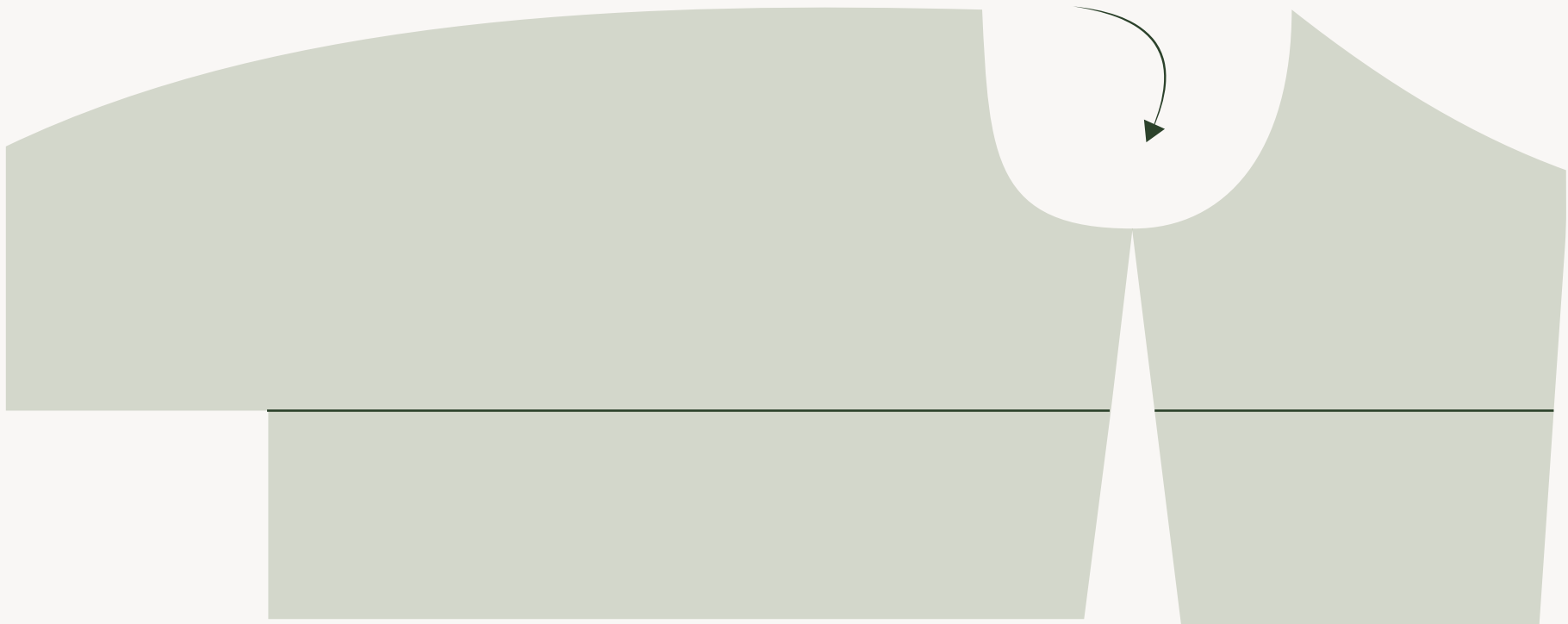
For the shirred back panel, I lowered it by 2 cm (compared to back length)



Width is 30 cm

Puff Sleeve Dress *Back*

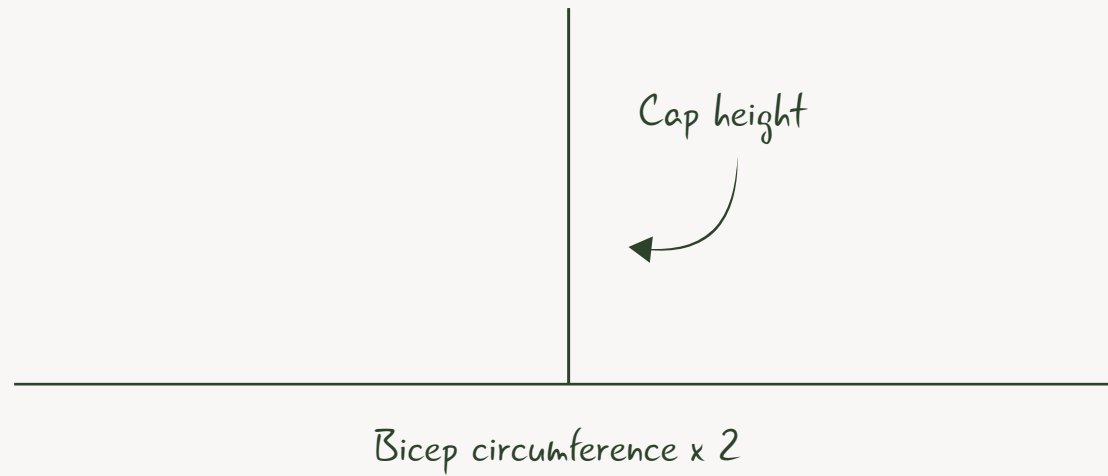
Make sure that the
seams align and that the
armhole curve is smooth



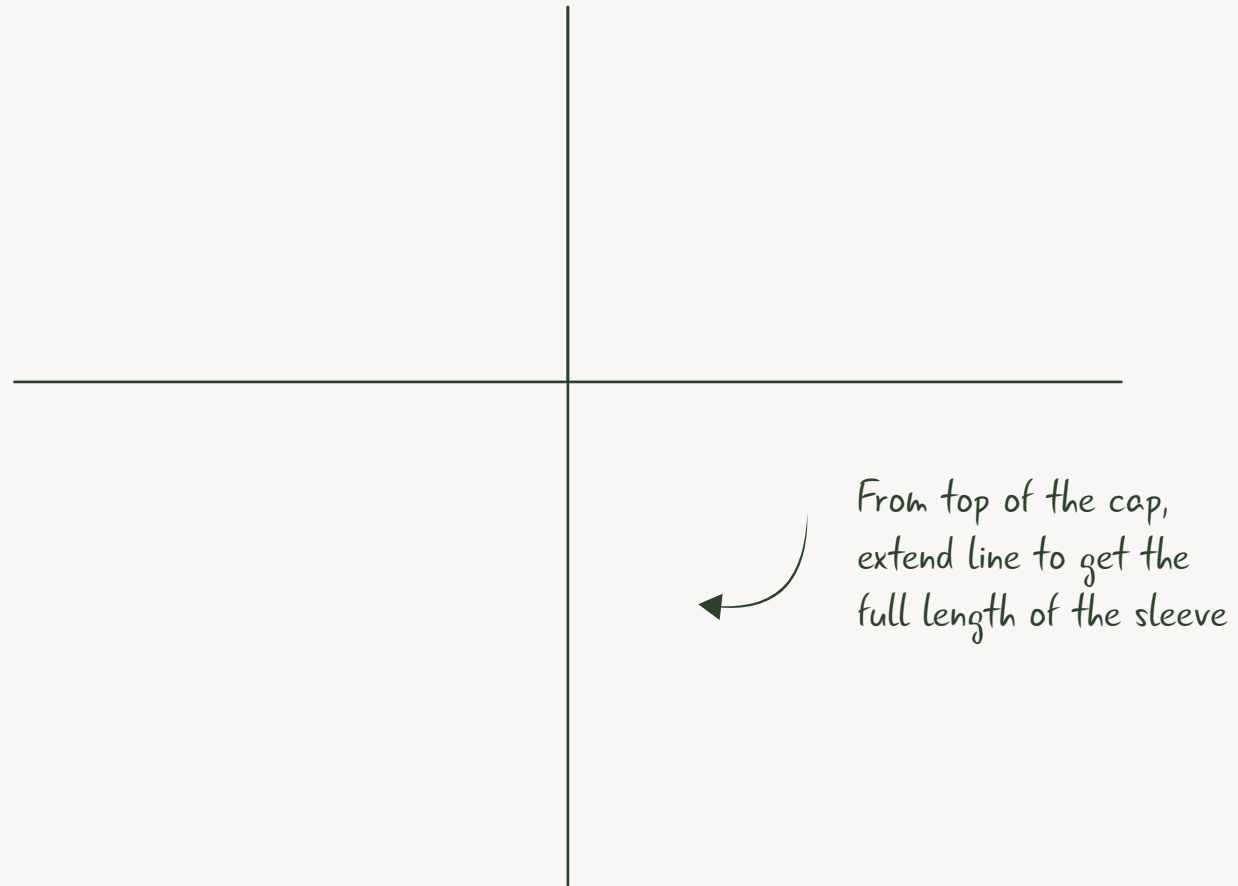


Sleeve

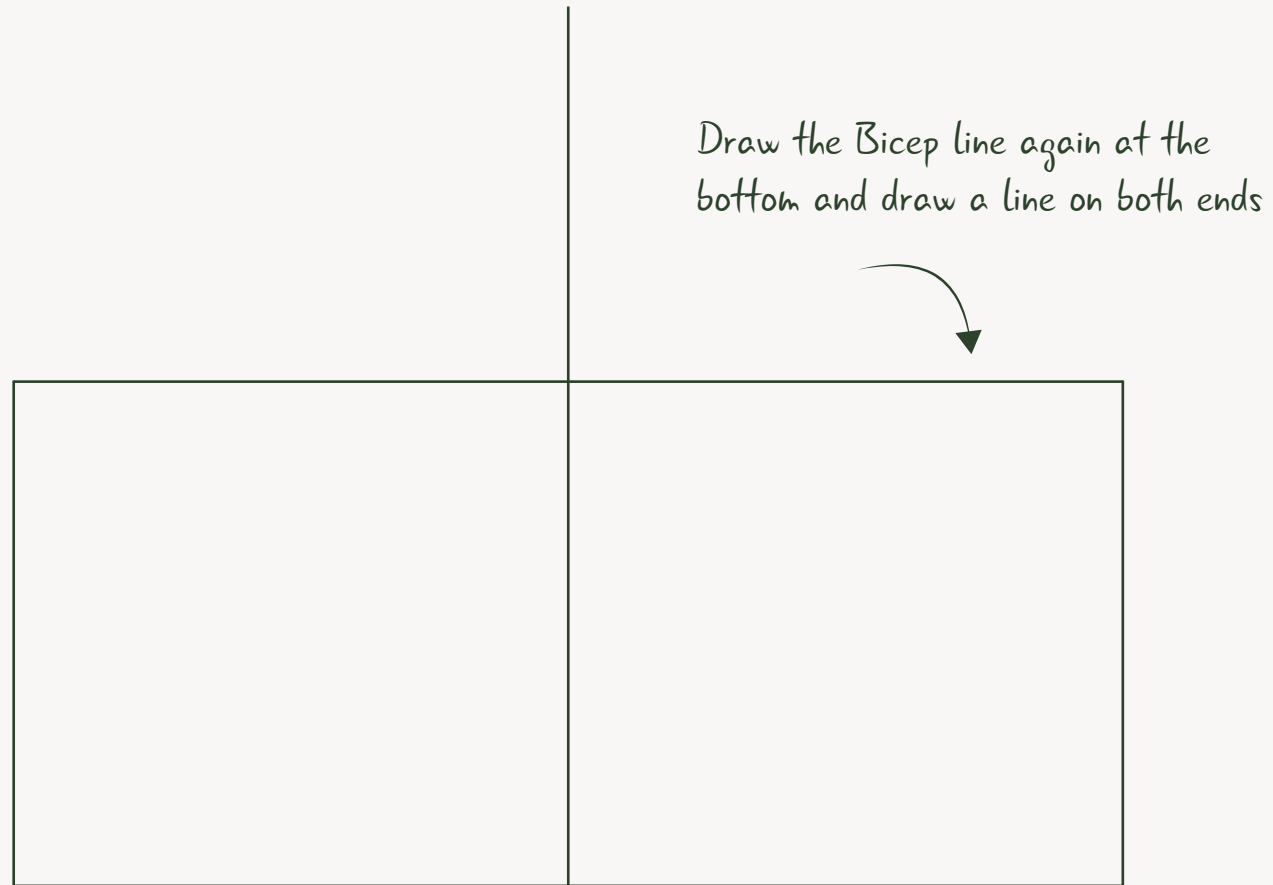
Puff Sleeve Dress *Sleeve*



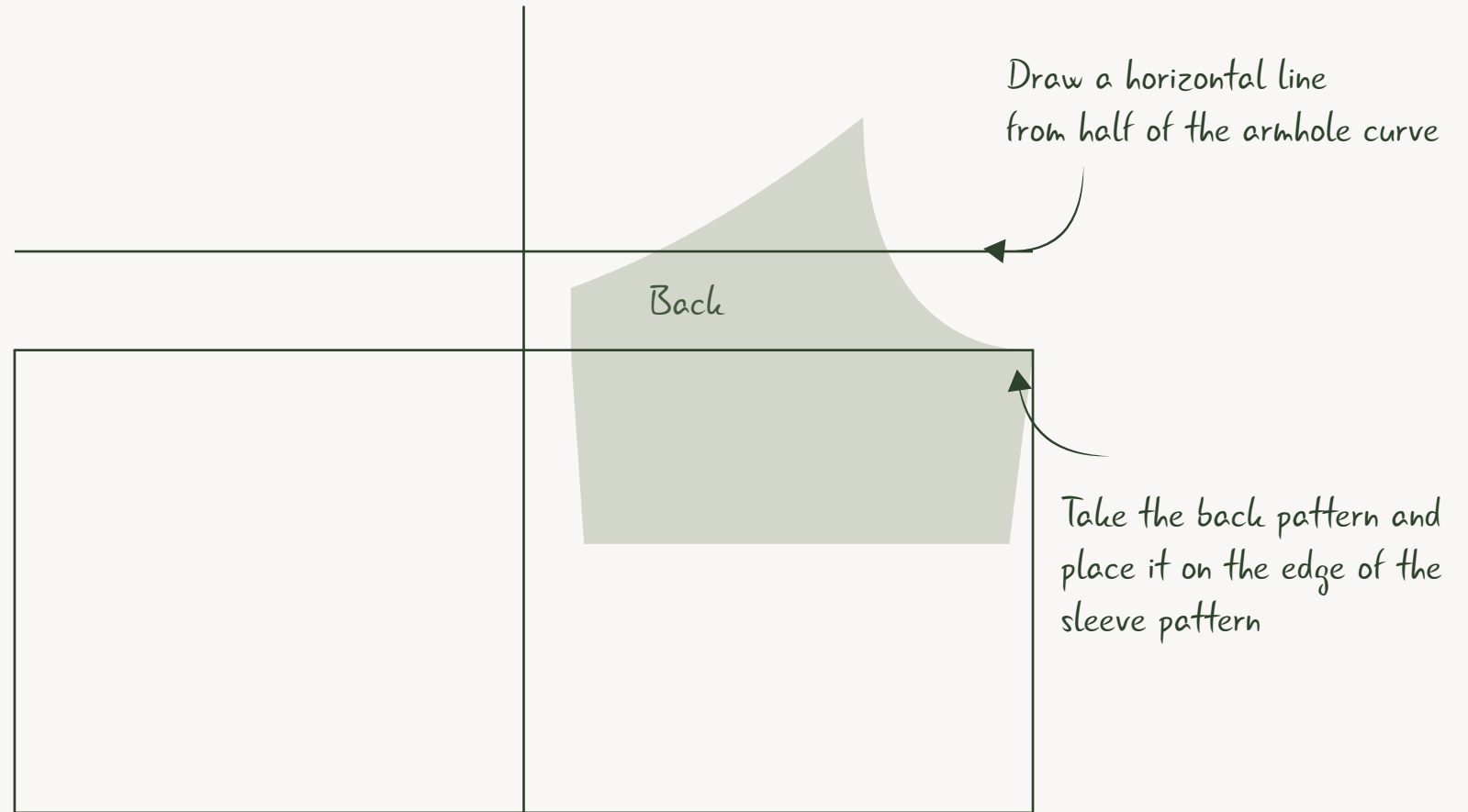
Puff Sleeve Dress *Sleeve*



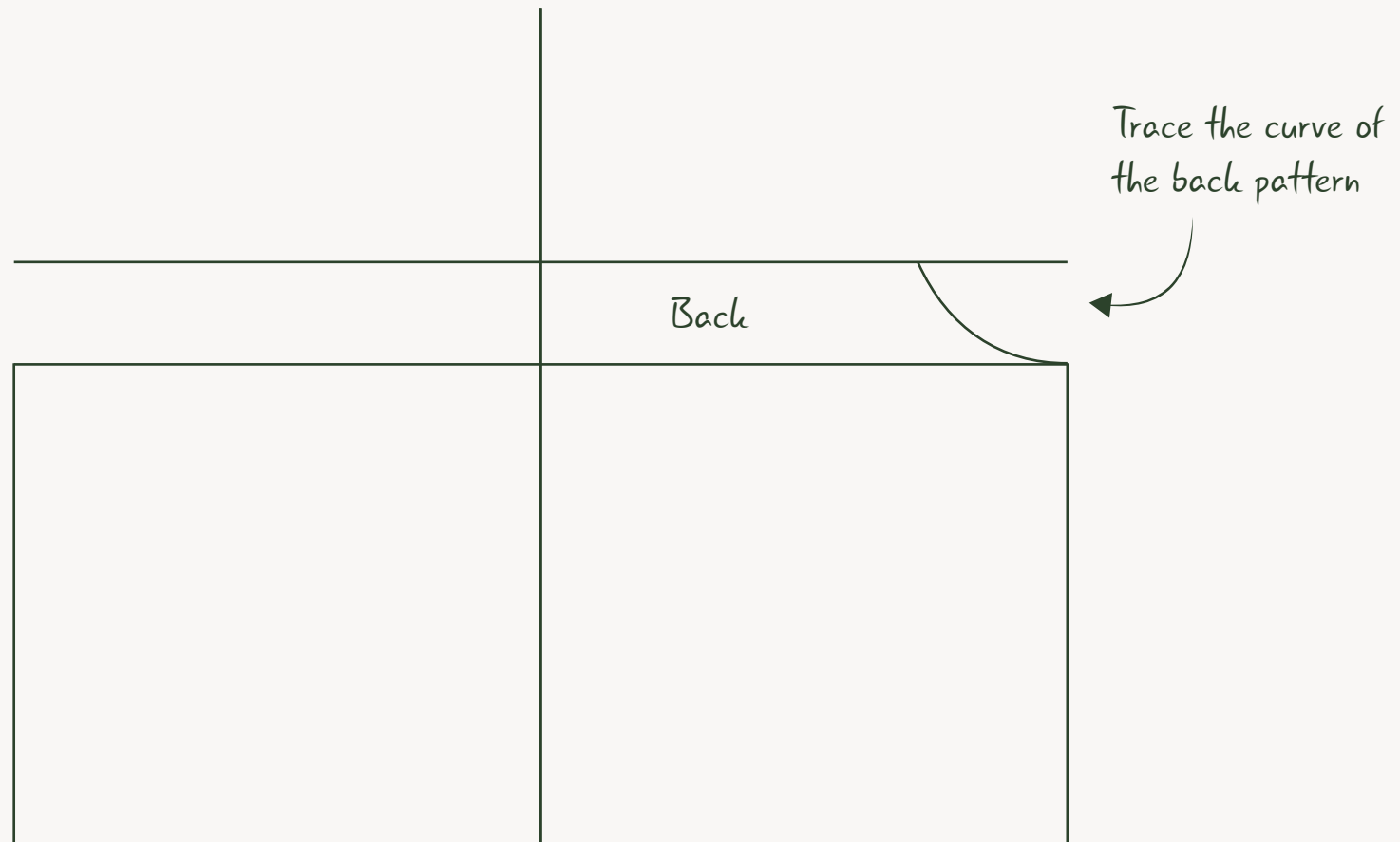
Puff Sleeve Dress *Sleeve*



Puff Sleeve Dress *Sleeve*

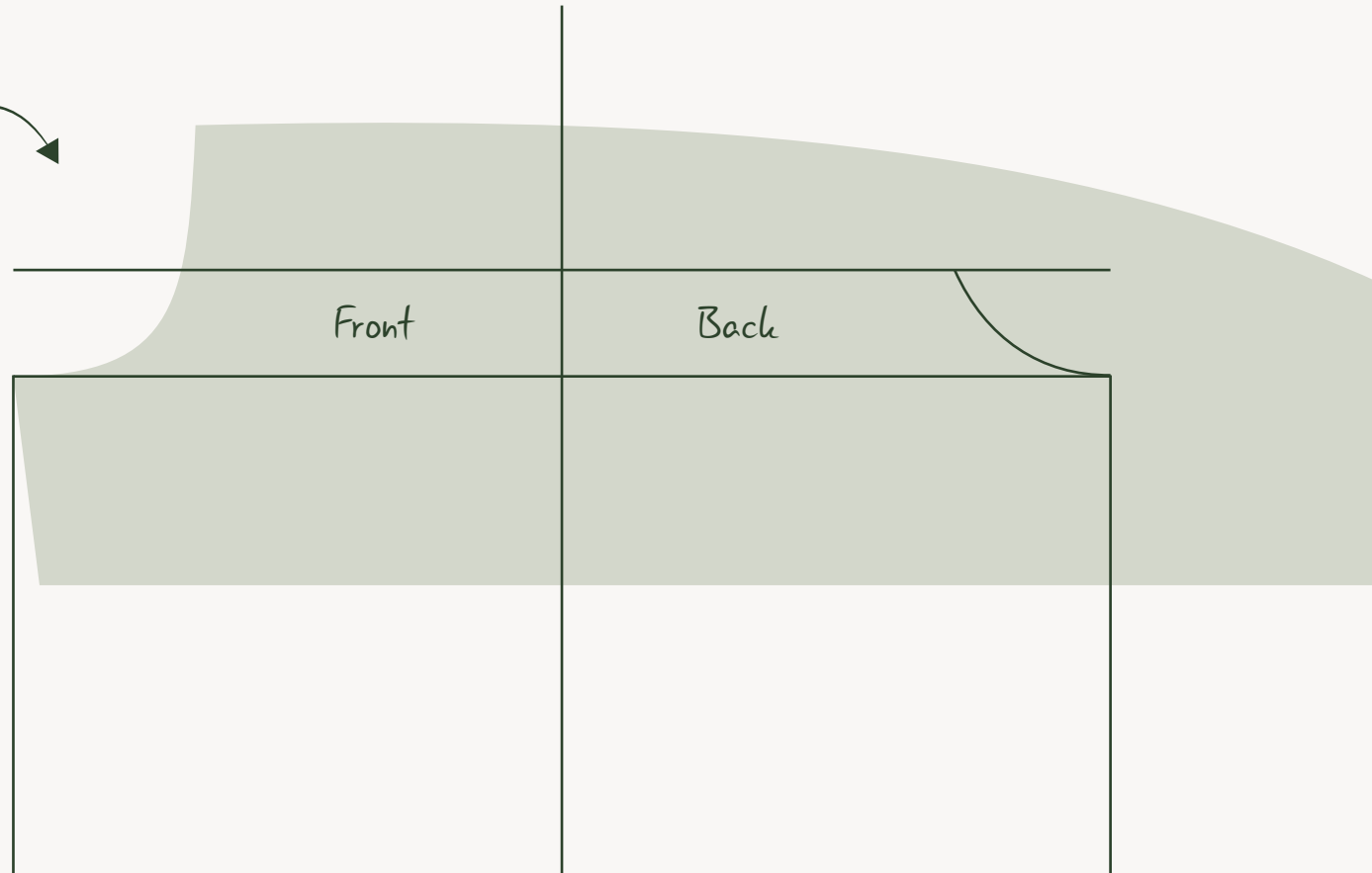


Puff Sleeve Dress *Sleeve*



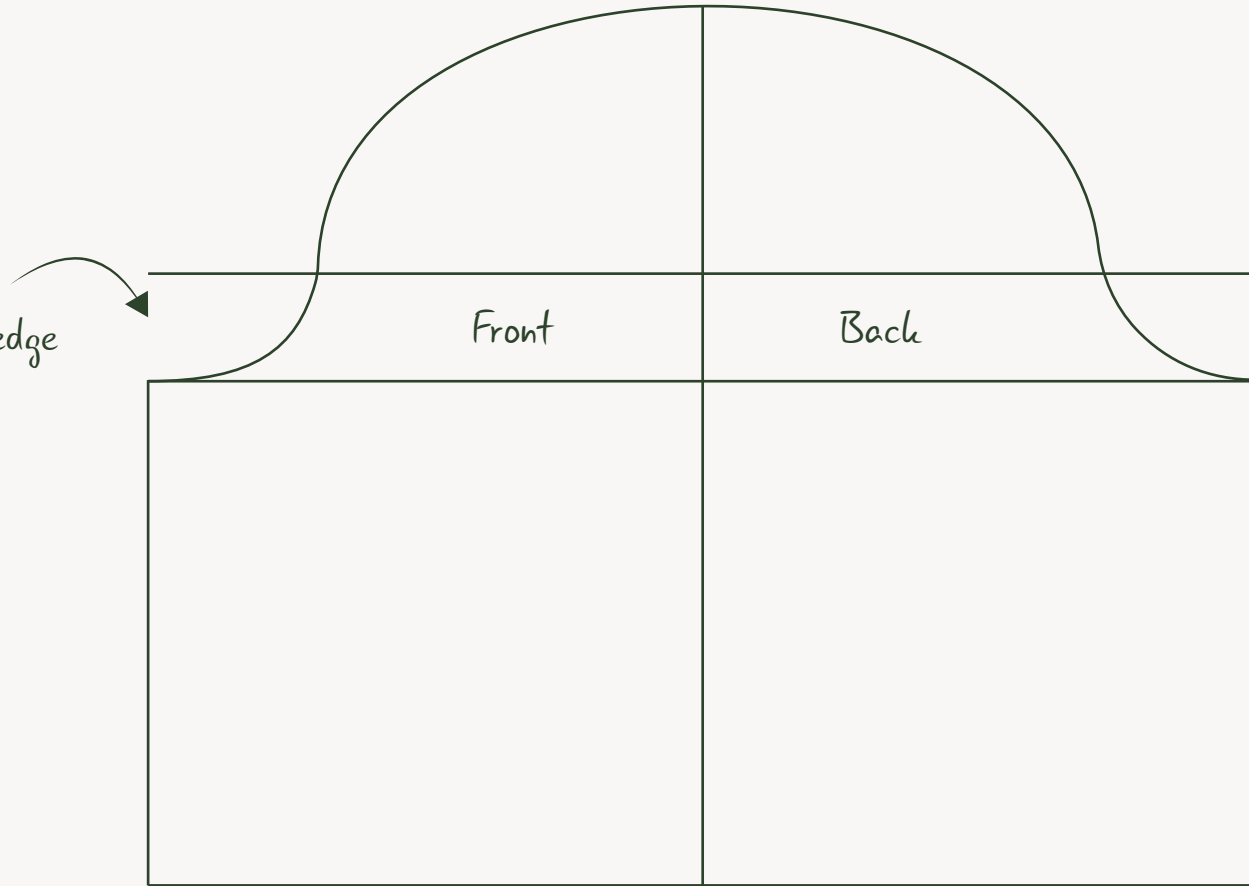
Puff Sleeve Dress *Sleeve*

Repeat on the other side:
-Add front pattern to the edge
-Trace the curve

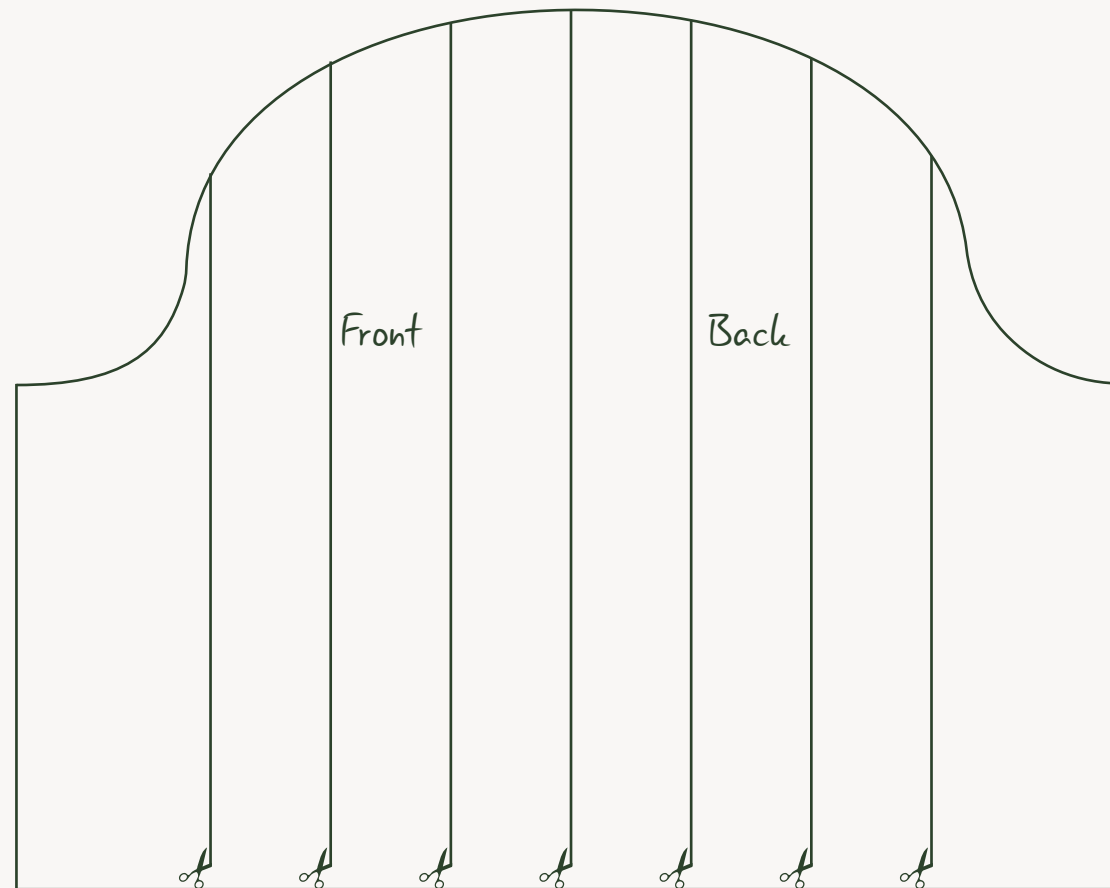


Puff Sleeve Dress *Sleeve*

Repeat on the other side:
-Add front pattern to the edge
-Trace the curve

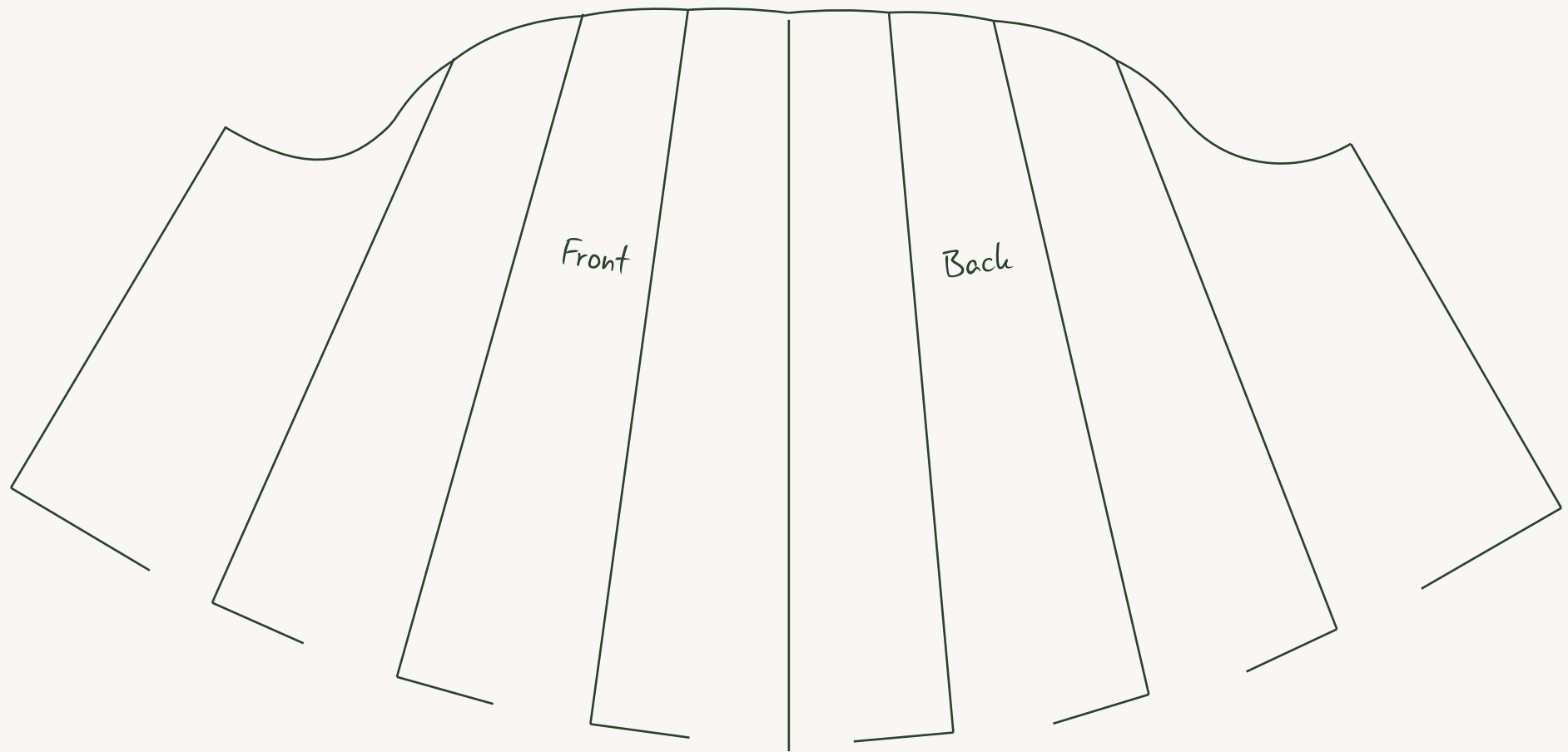


Puff Sleeve Dress *Sleeve*



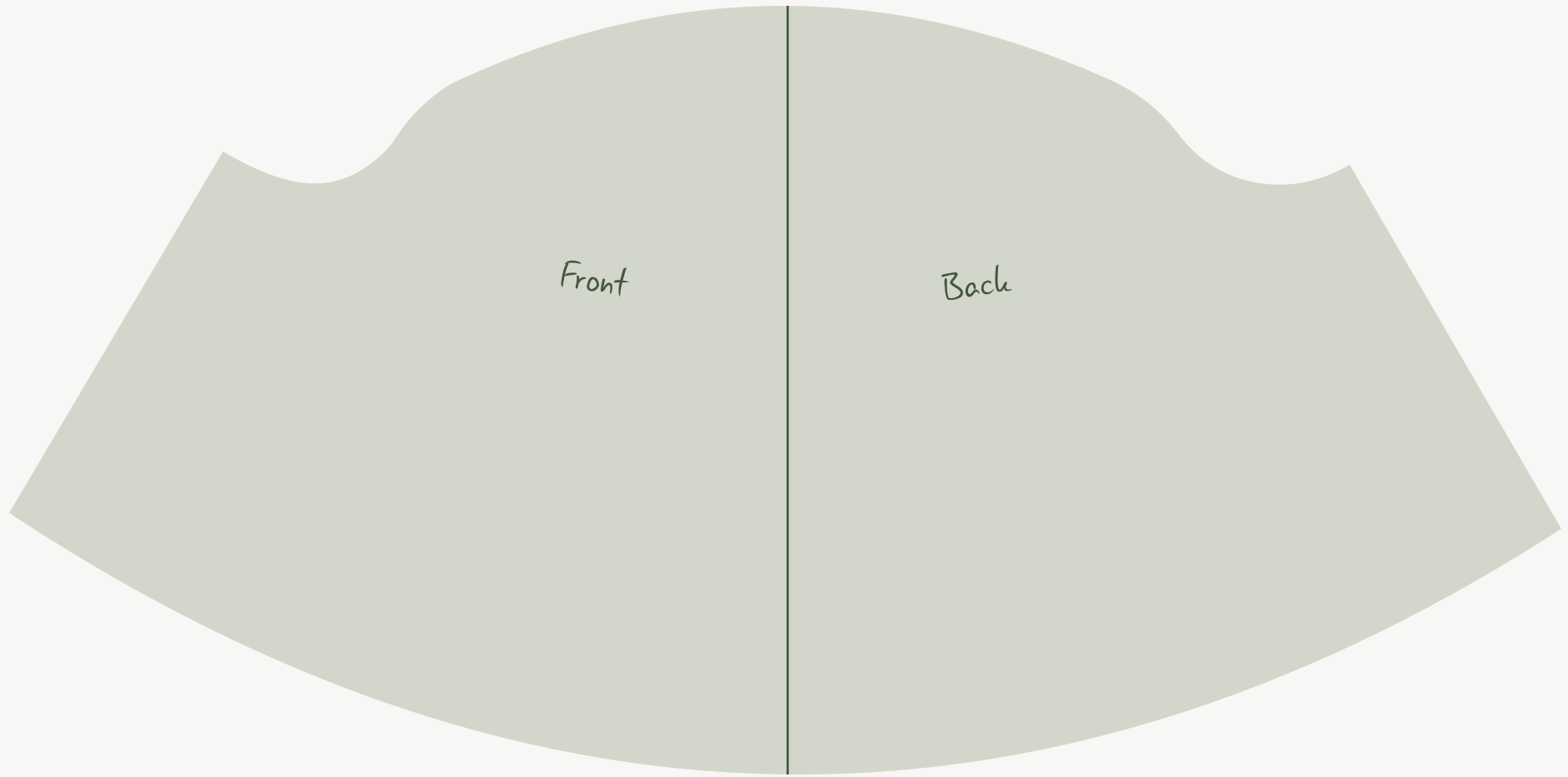
Draw vertical lines down and cut them to the edge of the sleeve curve.
The idea is to be able to rotate the sleeve to create volume

Puff Sleeve Dress *Sleeve*



Connect the curves together and smooth out the sleeve cap

Puff Sleeve Dress *Sleeve*



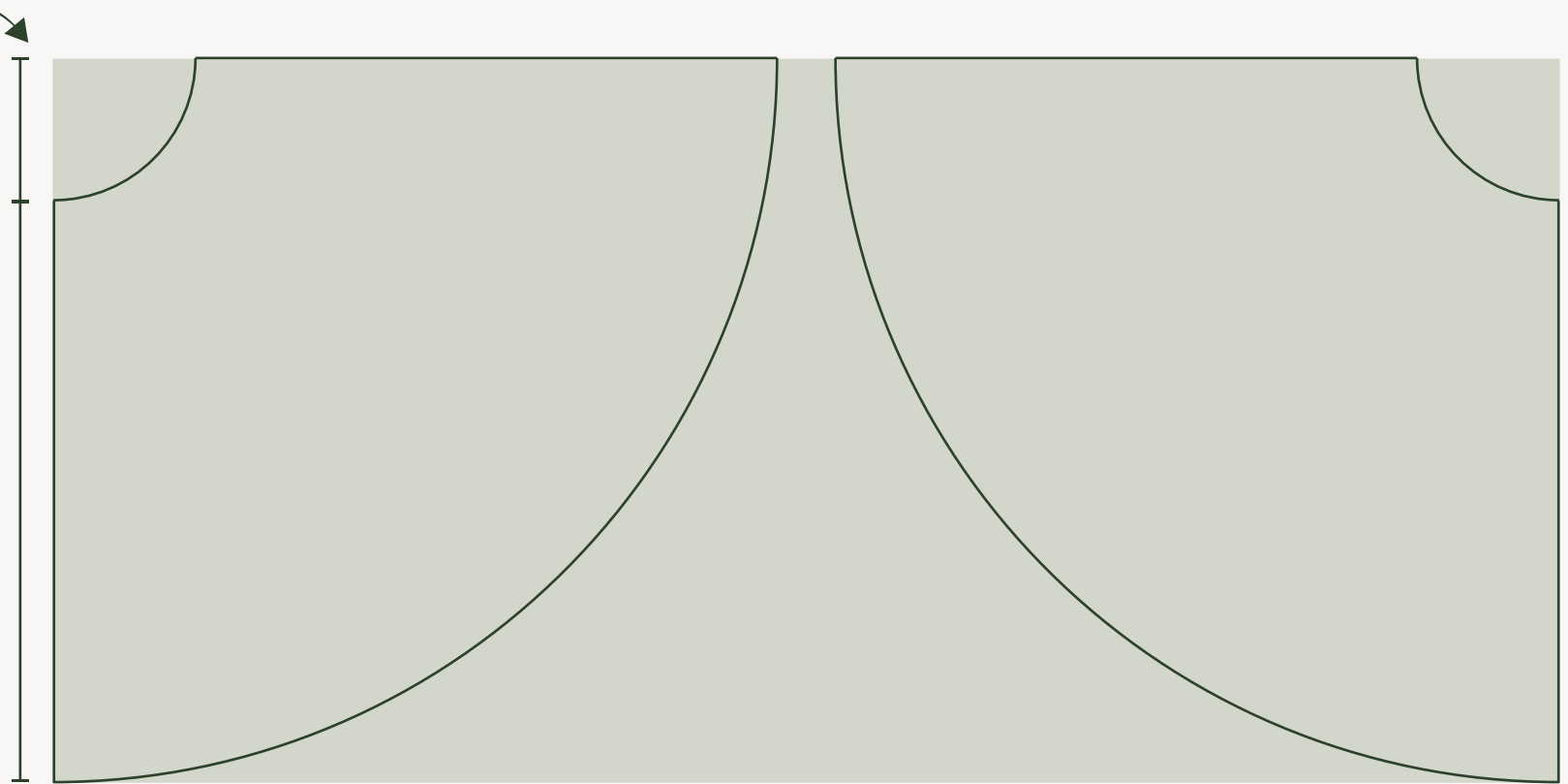


Skirt

Puff Sleeve Dress *Skirt*

Take waist measurement of your total bodice (including the 30cm back shirring) and use a circle skirt calculator to figure out the radius

Length of skirt

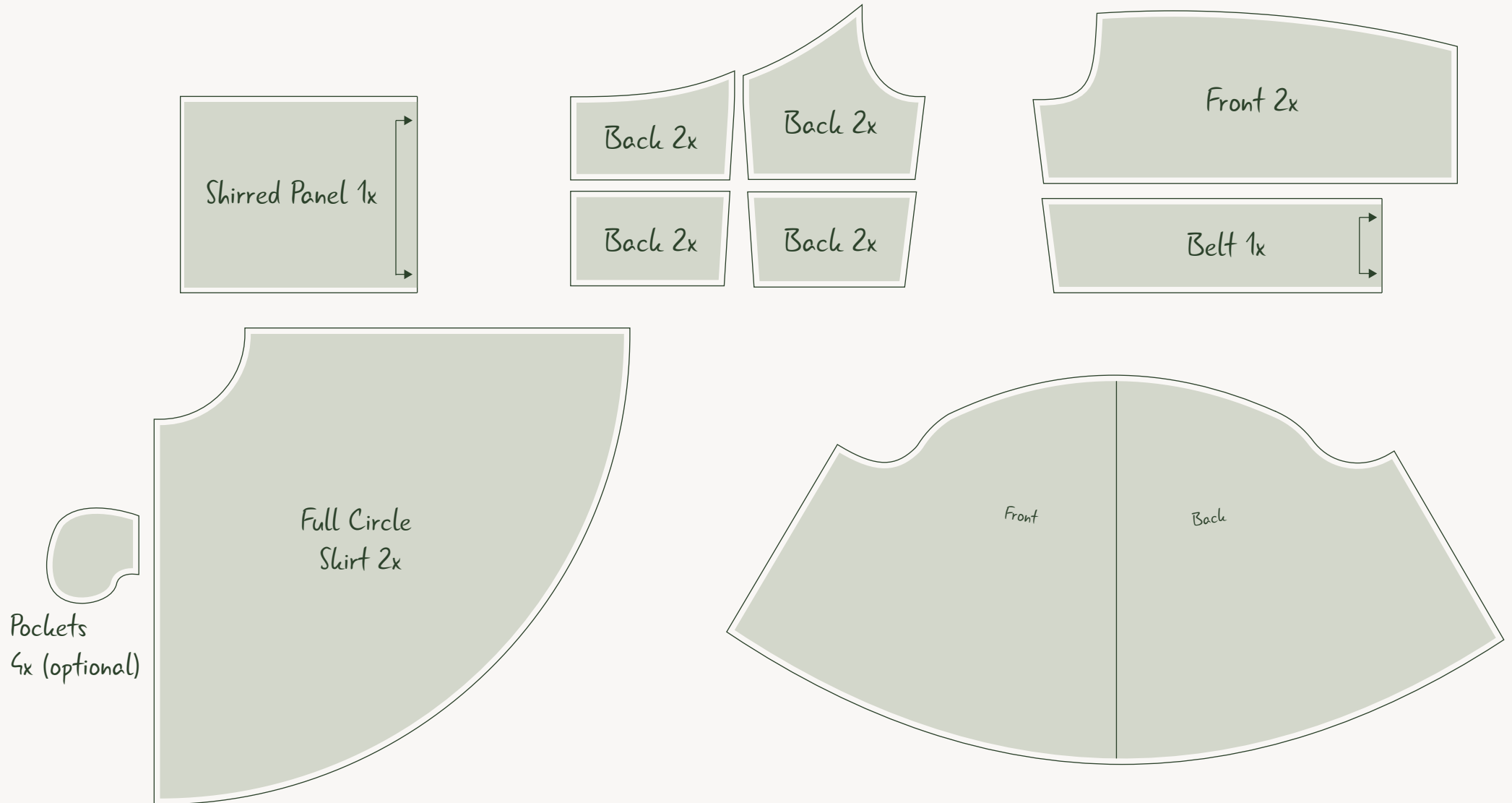


Cut 2x on fold for a full circle skirt

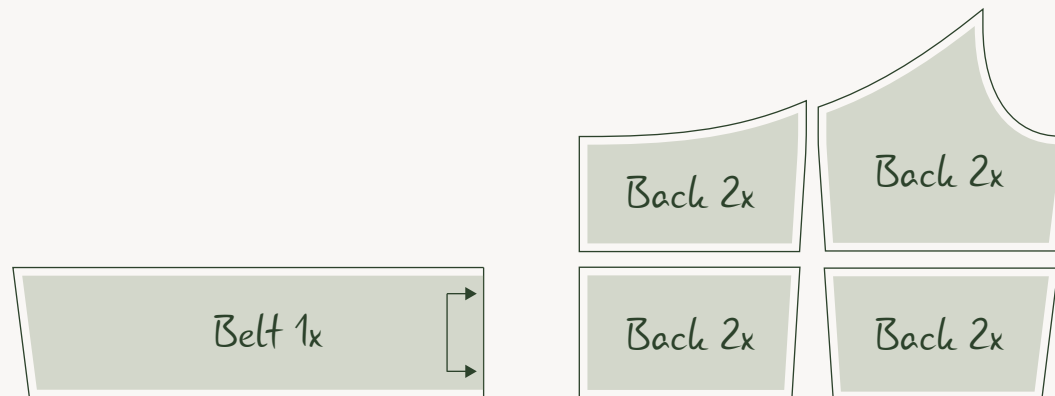


Overview

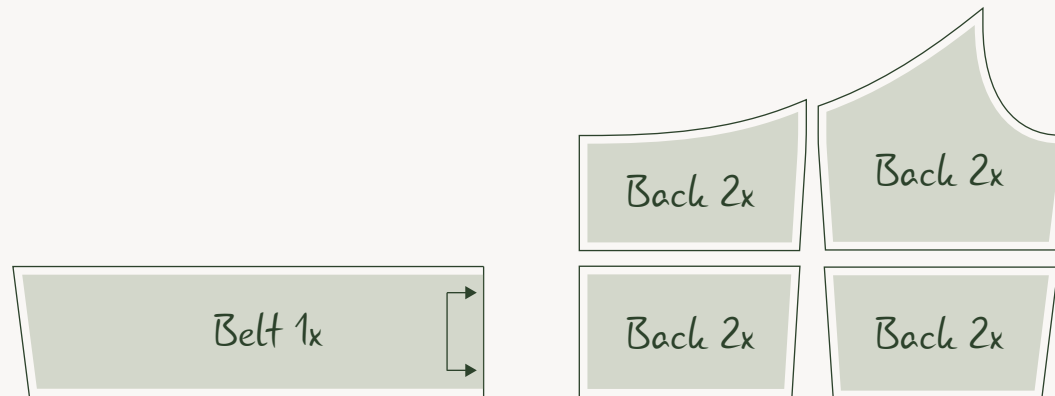
Puff Sleeve Dress - *Main Fabric*



Puff Sleeve Dress - *Fusible Fabric*



Puff Sleeve Dress - *Lining*



Please note: This workbook and its illustrations are for personal use only.
Commercial use or redistribution is not permitted.

Want to work or collaborate with me?
Email: My.aetherea@gmail.com